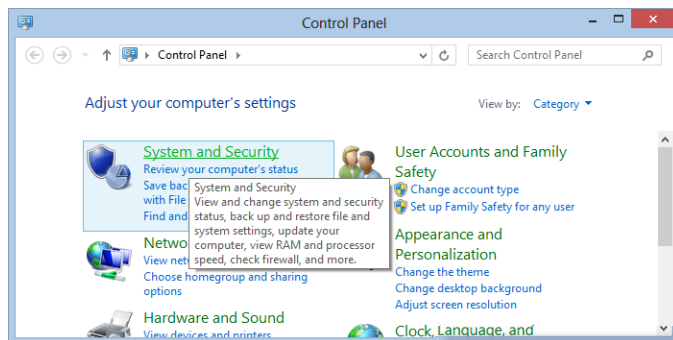
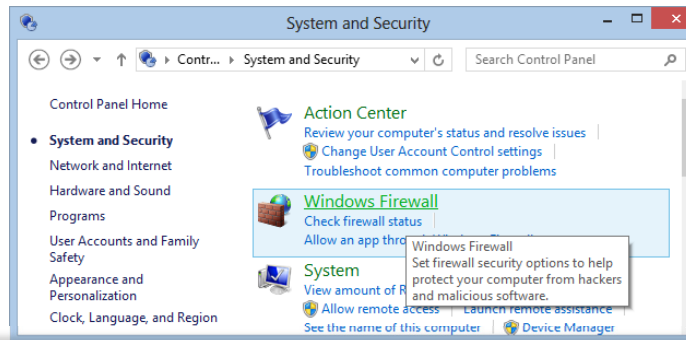


How to Open ECHO- request port in Windows Firewall (Windows 7, Windows 8 & 8.1)

Go to Control Panel and Open System and Security:

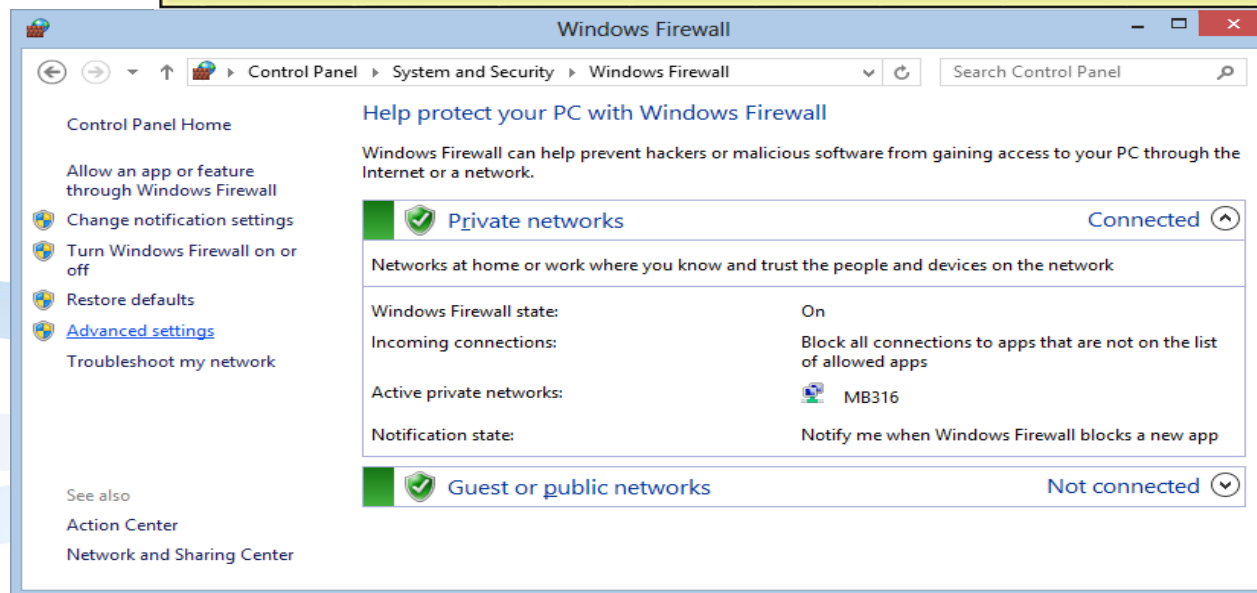


Open Windows Firewall:

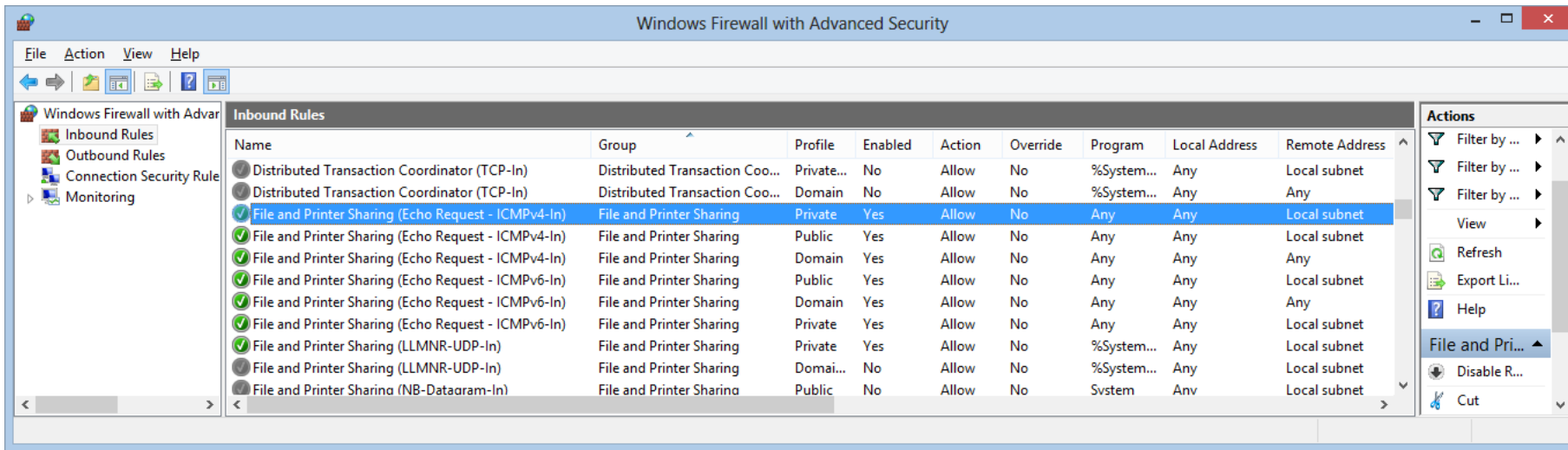


Choice Advanced settings:

DO NOT DISABLE WINDOWS FIREWALL!!!!

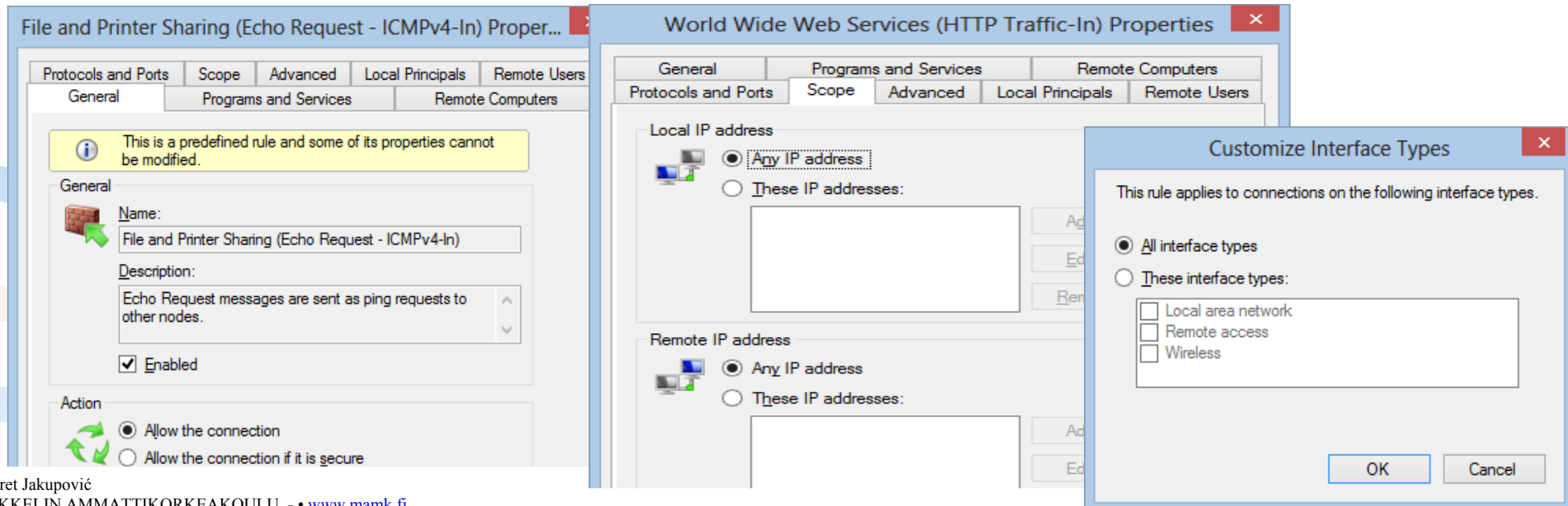


Go to Inbound Rules



Enable Echo Request ICMPv4-in (this enable request to PING in IPv4 protocoll)

Enable this to for all ICMPv4 Profiles (Private, Public and Domain) .



Windows Firewall with Advanced Security

Do it for http port to:

Name	Group	Profile	Enabled	Action	Override	Program	Local Address	Remote Address
Wireless Portable Devices (UPnP-In)	Wireless Portable Devices	All	No	Allow	No	System	Any	Local subnet
Virtual Machine Monitoring (DCOM-In)	Virtual Machine Monitoring	All	No	Allow	No	%System...	Any	Any
Virtual Machine Monitoring (Echo Request - ICMPv4-...)	Virtual Machine Monitoring	All	No	Allow	No	Any	Any	Any
Virtual Machine Monitoring (Echo Request - ICMPv6-...)	Virtual Machine Monitoring	All	No	Allow	No	Any	Any	Any
Virtual Machine Monitoring (NB-Session-In)	Virtual Machine Monitoring	All	No	Allow	No	Any	Any	Any
Virtual Machine Monitoring (RPC)	Virtual Machine Monitoring	All	No	Allow	No	%System...	Any	Any
World Wide Web Services (HTTP Traffic-In)	World Wide Web Services (...)	All	Yes	Allow	No	System	Any	Any
Zune Network Sharing Service (HTTP-Streaming-In)	Zune Network Sharing Service	Private...	No	Allow	No	System	Any	Local subnet
Zune Network Sharing Service (HTTP-Streaming-In)	Zune Network Sharing Service	Domain	No	Allow	No	System	Any	Any
Zune Network Sharing Service (qWave-TCP-In)	Zune Network Sharing Service	Private...	No	Allow	No	%System...	Any	Local subnet
Zune Network Sharing Service (qWave-TCP-In)	Zune Network Sharing Service	Domain	No	Allow	No	%System...	Any	Any

World Wide Web Services (HTTP Traffic-In) Properties

Protocols and Ports | Scope | Advanced | Local Principals

General | Programs and Services | Remote

This is a predefined rule and some of its properties cannot be modified.

General

Name: World Wide Web Services (HTTP Traffic-In)

Description: An inbound rule to allow HTTP traffic for Internet Information Services (IIS) [TCP 80]

Enabled

Action

Allow the connection

Allow the connection if it is secure

World Wide Web Services (HTTP Traffic-In) Properties

General | Programs and Services | Remote Computers

Protocols and Ports | Scope | Advanced | Local Principals | Remote

Profiles

Specify profiles to which this rule applies.

Domain

Private

Public

Interface types

Specify the interface types to which this rule applies. **Customize...**

Edge traversal

Edge traversal allows the computer to accept unsolicited inbound packets that have passed through an edge device such as a Network Address Translation (NAT) router or firewall.

Block edge traversal

World Wide Web Services (HTTP Traffic-In) Properties

General | Programs and Services | Remote Computers

Protocols and Ports | Scope | Advanced | Local Principals | Remote Users

Protocols and ports

Protocol type: TCP

Protocol number: 6

Local port: Specific Ports

80

Remote port: All Ports

Internet Control Message Protocol (ICMP) settings: **Customize...**