

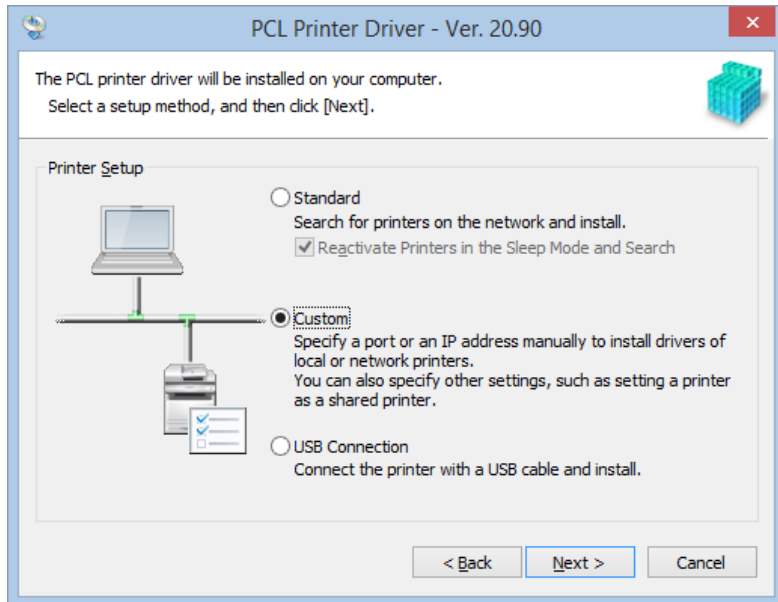
MB313 huoneen tulostinasennus ja tulostus

Jos tulostinta ei näy luettelossa kannata tulostaa suoran tulostimen IP:lle

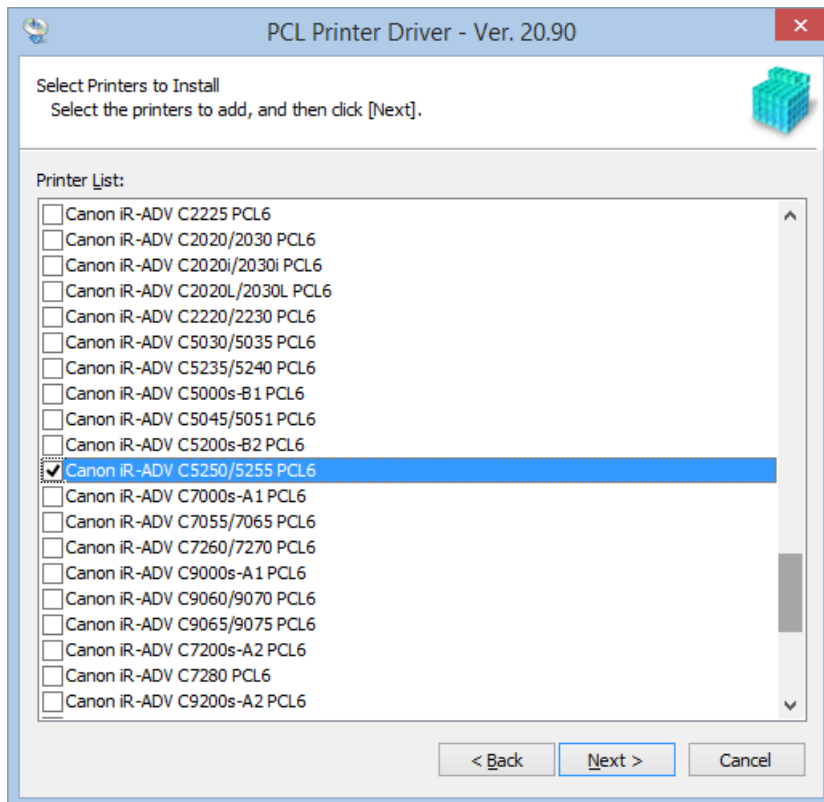
IP: **10.20.201.100**

Ajuri: **Canon iR-ADV C5250/5255 PCL6**

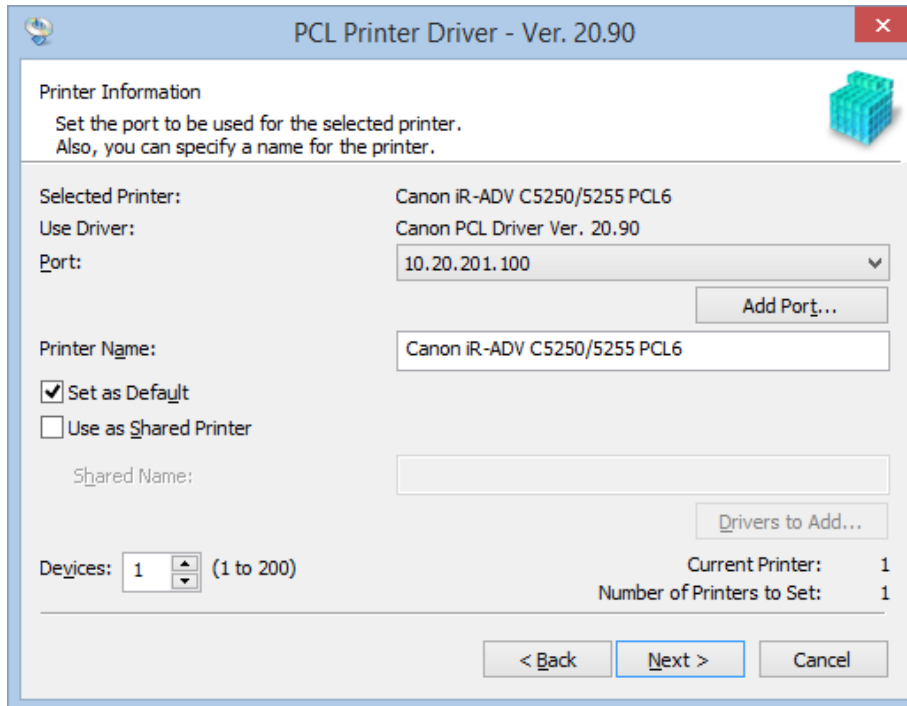
(<http://cna.mikkeliyamk.fi/Public/Drivers/Canon/c5250/>)



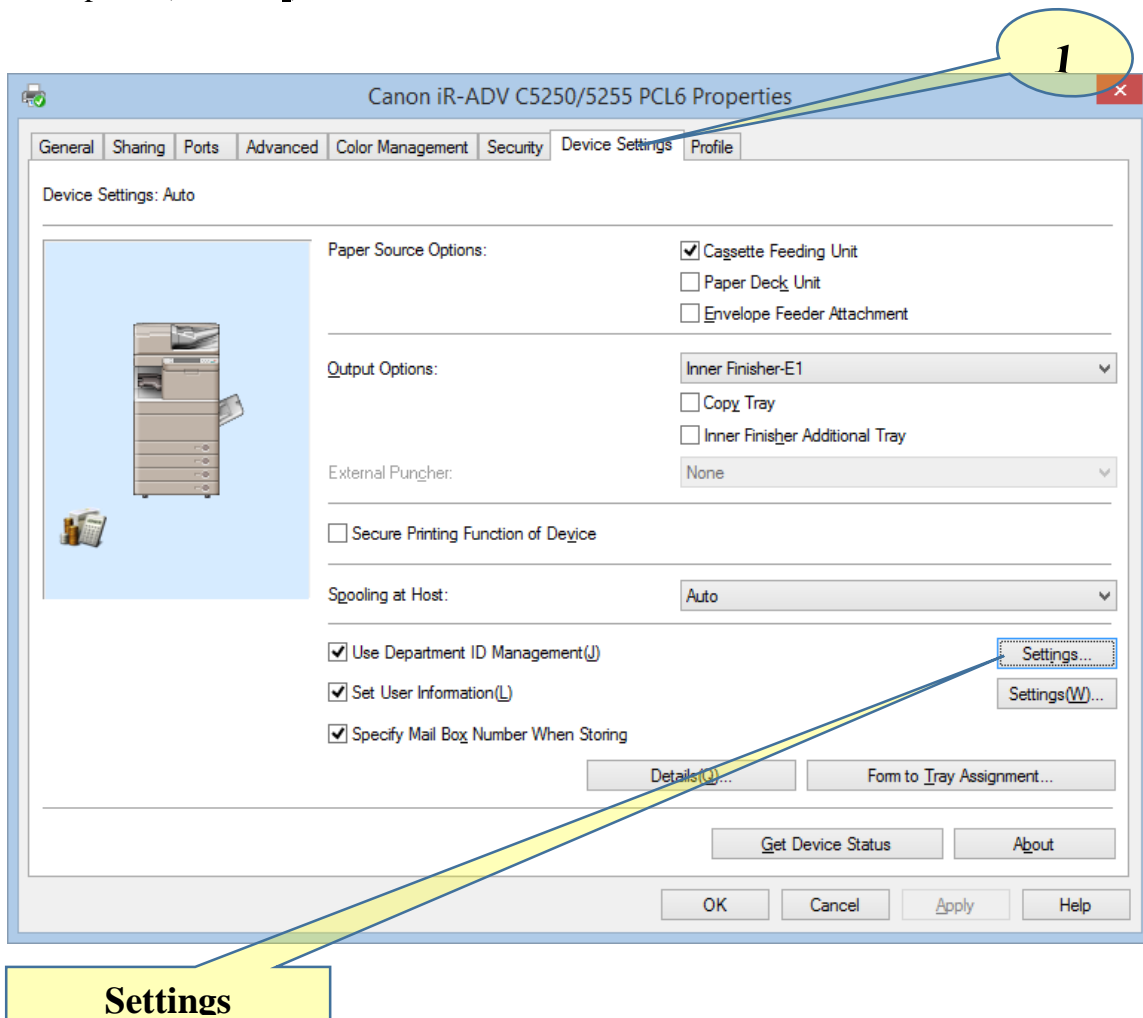
valitse *Custom*

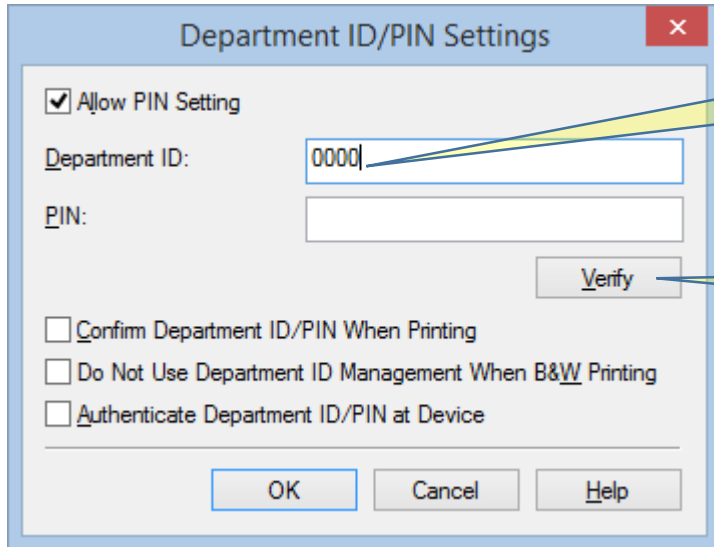


valitse *Canon iR-ADV C5250/5255 PCL6*



Lisää portti (*Add Port*) 10.20.201.100





Department ID/PIN Settings

Allow PIN Setting

Department ID:

PIN:

Confirm Department ID/PIN When Printing

Do Not Use Department ID Management When B&W Printing

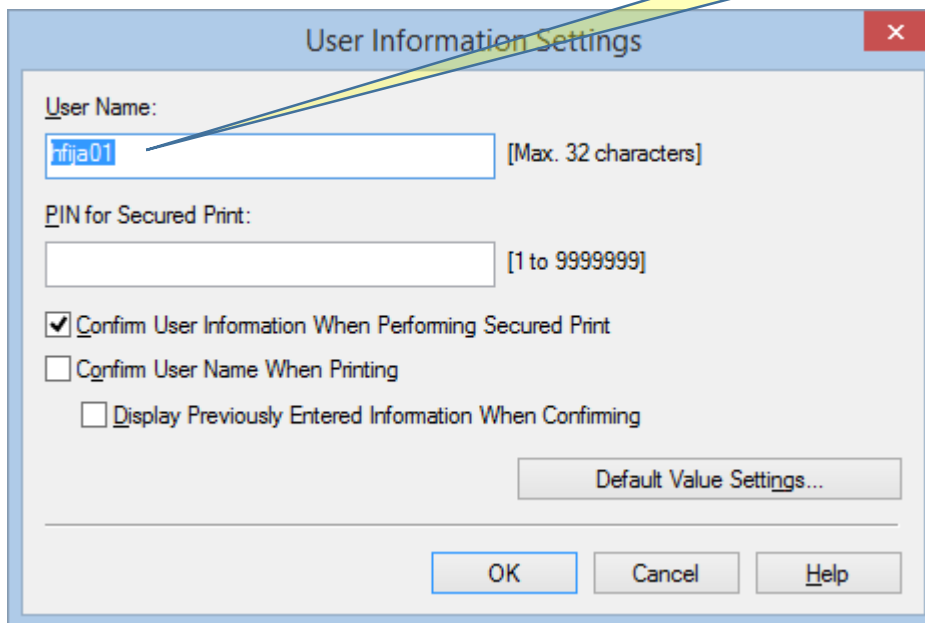
Authenticate Department ID/PIN at Device

Osaston
kopiointitunnus

Tarkasta
kopiointitunnus

Settings(W)...

Oma
käyttäjätunnus



User Information Settings

User Name: [Max. 32 characters]

PIN for Secured Print: [1 to 9999999]

Confirm User Information When Performing Secured Print

Confirm User Name When Printing

Display Previously Entered Information When Confirming